

Trumpet Scales Grade 7 AB

C Major, a 12th

Two staves of musical notation for the C Major scale, a 12th. The first staff shows the first ending (upward scale), and the second staff shows the second ending (downward scale). The key signature is C major and the time signature is 4/4.

Db Major, a 12th

Two staves of musical notation for the Db Major scale, a 12th. The first staff shows the first ending (upward scale), and the second staff shows the second ending (downward scale). The key signature is Db major and the time signature is 4/4.

D Major, a 12th

Two staves of musical notation for the D Major scale, a 12th. The first staff shows the first ending (upward scale), and the second staff shows the second ending (downward scale). The key signature is D major and the time signature is 4/4.

Eb Major, a 12th

Two staves of musical notation for the Eb Major scale, a 12th. The first staff shows the first ending (upward scale), and the second staff shows the second ending (downward scale). The key signature is Eb major and the time signature is 4/4.

E Major, a 12th

Two staves of musical notation for the E Major scale, a 12th. The first staff shows the first ending (upward scale), and the second staff shows the second ending (downward scale). The key signature is E major and the time signature is 4/4.

F Major, a 12th

Two staves of musical notation for the F Major scale, a 12th. The first staff shows the first ending (upward scale), and the second staff shows the second ending (downward scale). The key signature is F major and the time signature is 4/4.

F# Major, 2 Octaves

Two musical staves for F# Major in 4/4 time. The first staff contains a continuous melodic line across two octaves. The second staff shows the same melodic line with a final whole note chord at the end of the second octave.

G Major, 2 Octaves

Two musical staves for G Major in 4/4 time. The first staff contains a continuous melodic line across two octaves. The second staff shows the same melodic line with a final whole note chord at the end of the second octave.

Ab Major, 2 Octaves

Two musical staves for Ab Major in 4/4 time. The first staff contains a continuous melodic line across two octaves. The second staff shows the same melodic line with a final whole note chord at the end of the second octave.

A Major, 2 Octaves

Two musical staves for A Major in 4/4 time. The first staff contains a continuous melodic line across two octaves. The second staff shows the same melodic line with a final whole note chord at the end of the second octave.

Bb Major, 2 Octaves

Two musical staves for Bb Major in 4/4 time. The first staff contains a continuous melodic line across two octaves. The second staff shows the same melodic line with a final whole note chord at the end of the second octave.

B Major, 2 Octaves

Two musical staves for B Major in 4/4 time. The first staff contains a continuous melodic line across two octaves. The second staff shows the same melodic line with a final whole note chord at the end of the second octave.

C Harmonic Minor, a 12th

Musical notation for C Harmonic Minor, a 12th, in 4/4 time. The key signature has two flats (Bb and Eb). The ascending scale is: C4, D4, E4, F4, G4, Ab4, Bb4, C5. The descending scale is: C5, Bb4, Ab4, G4, F4, E4, D4, C4. The notation includes a double bar line at the end of the descending scale.

C Melodic Minor, a 12th

Musical notation for C Melodic Minor, a 12th, in 4/4 time. The key signature has two flats (Bb and Eb). The ascending scale is: C4, D4, E4, F4, G4, Ab4, Bb4, C5. The descending scale is: C5, Bb4, Ab4, G4, F4, E4, D4, C4. The notation includes a double bar line at the end of the descending scale.

C# Harmonic Minor, a 12th

Musical notation for C# Harmonic Minor, a 12th, in 4/4 time. The key signature has three sharps (F#, C#, G#). The ascending scale is: C4, D4, E4, F#4, G#4, A#4, B4, C5. The descending scale is: C5, B4, A#4, G#4, F#4, E4, D4, C4. The notation includes a double bar line at the end of the descending scale.

C# Melodic Minor, a 12th

Musical notation for C# Melodic Minor, a 12th, in 4/4 time. The key signature has three sharps (F#, C#, G#). The ascending scale is: C4, D4, E4, F#4, G#4, A#4, B4, C5. The descending scale is: C5, B4, A#4, G#4, F#4, E4, D4, C4. The notation includes a double bar line at the end of the descending scale.

D Harmonic Minor, a 12th

Musical notation for D Harmonic Minor, a 12th, in 4/4 time. The key signature has one sharp (F#). The ascending scale is: D4, E4, F#4, G#4, A4, Bb4, C5. The descending scale is: C5, Bb4, A4, G#4, F#4, E4, D4. The notation includes a double bar line at the end of the descending scale.

D Melodic Minor, a 12th

Musical notation for D Melodic Minor, a 12th, in 4/4 time. The key signature has one sharp (F#). The ascending scale is: D4, E4, F#4, G#4, A4, Bb4, C5. The descending scale is: C5, Bb4, A4, G#4, F#4, E4, D4. The notation includes a double bar line at the end of the descending scale.

Eb Harmonic Minor, a 12th

Musical notation for Eb Harmonic Minor, a 12th, showing two staves of a scale in 4/4 time. The first staff contains the ascending scale: Eb, F, G, Ab, Bb, C, D, Eb. The second staff contains the descending scale: Eb, D, C, Bb, Ab, G, F, Eb. The key signature has three flats (Eb, Fb, Gb) and the time signature is 4/4.

Eb Melodic Minor, a 12th

Musical notation for Eb Melodic Minor, a 12th, showing two staves of a scale in 4/4 time. The first staff contains the ascending scale: Eb, F, G, Ab, Bb, C, D, Eb. The second staff contains the descending scale: Eb, D, C, Bb, Ab, G, F, Eb. The key signature has three flats (Eb, Fb, Gb) and the time signature is 4/4.

E Harmonic Minor, a 12th

Musical notation for E Harmonic Minor, a 12th, showing two staves of a scale in 4/4 time. The first staff contains the ascending scale: E, F#, G, A, B, C, D, E. The second staff contains the descending scale: E, D, C, B, A, G, F#, E. The key signature has one sharp (F#) and the time signature is 4/4.

E Melodic Minor, a 12th

Musical notation for E Melodic Minor, a 12th, showing two staves of a scale in 4/4 time. The first staff contains the ascending scale: E, F#, G, A, B, C, D, E. The second staff contains the descending scale: E, D, C, B, A, G, F, E. The key signature has one sharp (F#) and the time signature is 4/4.

F Harmonic Minor, a 12th

Musical notation for F Harmonic Minor, a 12th, showing two staves of a scale in 4/4 time. The first staff contains the ascending scale: F, G, Ab, Bb, C, D, Eb, F. The second staff contains the descending scale: F, Eb, D, C, Bb, Ab, G, F. The key signature has two flats (Fb, Gb) and the time signature is 4/4.

F Melodic Minor, a 12th

Musical notation for F Melodic Minor, a 12th, showing two staves of a scale in 4/4 time. The first staff contains the ascending scale: F, G, Ab, Bb, C, D, Eb, F. The second staff contains the descending scale: F, Eb, D, C, Bb, Ab, G, F. The key signature has two flats (Fb, Gb) and the time signature is 4/4.

F# Harmonic Minor, 2 Octaves

F# Melodic Minor, 2 Octaves

G Harmonic Minor, 2 Octaves

G Melodic Minor, 2 Octaves

G# Harmonic Minor, 2 Octaves

G# Melodic Minor, 2 Octaves

A Harmonic Minor, 2 Octaves

Two staves of musical notation for A Harmonic Minor, 2 Octaves. The first staff shows the ascending scale: C4, D4, E4, F4, G4, A4, B4, C5, B4, A4, G4, F4, E4, D4, C4. The second staff shows the descending scale: C5, B4, A4, G4, F4, E4, D4, C4, B3, A3, G3, F3, E3, D3, C3.

A Melodic Minor, 2 Octaves

Two staves of musical notation for A Melodic Minor, 2 Octaves. The first staff shows the ascending scale: C4, D4, E4, F4, G4, A4, B4, C5, B4, A4, G4, F4, E4, D4, C4. The second staff shows the descending scale: C5, B4, A4, G4, F4, E4, D4, C4, B3, A3, G3, F3, E3, D3, C3.

Bb Harmonic Minor, 2 Octaves

Two staves of musical notation for Bb Harmonic Minor, 2 Octaves. The first staff shows the ascending scale: C4, D4, Eb4, F4, G4, Ab4, Bb4, C5, Bb4, Ab4, G4, F4, Eb4, D4, C4. The second staff shows the descending scale: C5, Bb4, Ab4, G4, F4, Eb4, D4, C4, Bb3, Ab3, G3, F3, Eb3, D3, C3.

Bb Melodic Minor, 2 Octaves

Two staves of musical notation for Bb Melodic Minor, 2 Octaves. The first staff shows the ascending scale: C4, D4, Eb4, F4, G4, Ab4, Bb4, C5, Bb4, Ab4, G4, F4, Eb4, D4, C4. The second staff shows the descending scale: C5, Bb4, Ab4, G4, F4, Eb4, D4, C4, Bb3, Ab3, G3, F3, Eb3, D3, C3.

B Harmonic Minor, 2 Octaves

Two staves of musical notation for B Harmonic Minor, 2 Octaves. The first staff shows the ascending scale: C4, D4, E4, F4, G4, A4, B4, C5, B4, A4, G4, F4, E4, D4, C4. The second staff shows the descending scale: C5, B4, A4, G4, F4, E4, D4, C4, B3, A3, G3, F3, E3, D3, C3.

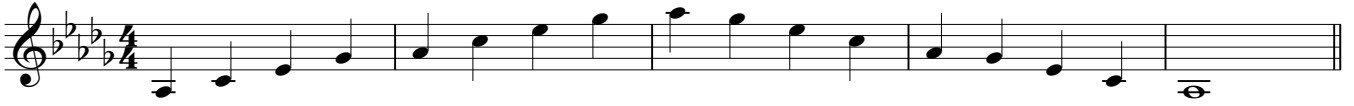
B Melodic Minor, 2 Octaves

Two staves of musical notation for B Melodic Minor, 2 Octaves. The first staff shows the ascending scale: C4, D4, E4, F4, G4, A4, B4, C5, B4, A4, G4, F4, E4, D4, C4. The second staff shows the descending scale: C5, B4, A4, G4, F4, E4, D4, C4, B3, A3, G3, F3, E3, D3, C3.

Dominant 7th in the key of C, 2 Octaves



Dominant 7th in the key of Db, 2 Octaves



Dominant 7th in the key of Eb, 2 Octaves



Diminished 7th in Ab, 2 Octaves



Diminished 7th in A, 2 Octaves



F# Chromatic, 2 Octaves



G Chromatic, 2 Octaves



Ab Chromatic, 2 Octaves



A Chromatic, 2 Octaves



Bb Chromatic, 2 Octaves



B Chromatic, 2 Octaves

